

**DIRECT SUPPORT AND GENERAL SUPPORT MAINTENANCE REPAIR PARTS AND
SPECIAL TOOLS LIST FOR BINOCULAR M18 W/E (6650-863-5657)**

**Headquarters, Department of the Army, Washington, D.C. 20315
17 March 1971**

This manual is current as of 12 March 1971

	Paragraphs	Pages
Section I. INTRODUCTION		
Scope -----	1	2
General -----	2	2
Explanation of columns -----	3	2
Special information -----	4	3
How to locate repair parts -----	5	4
Abbreviations -----	6	4
Federal supply codes for manufacturers -----	7	4
Reporting of errors -----	8	4
II. REPAIR PARTS FOR DIRECT SUPPORT, GENERAL SUPPORT, AND DEPOT MAINTENANCE -----		6
Binocular M18 W/E 8270115 -----		6
Binoculars 10614360 -----		8
Body 8620086 W/Related Parts -----		11
Mount Assembly, Eyepiece 10614369 -----		14
Tube, Hinge 8620085, W/Related Parts -----		17
III. SPECIAL TOOLS, TEST AND SUPPORT EQUIPMENT FOR DIRECT SUPPORT, GENERAL SUPPORT, AND DEPOT MAINTENANCE -----		20
IV. INDEX-FEDERAL STOCK NUMBER AND REFERENCE NUMBER CROSS-REFERENCE TO FIGURE AND ITEM NUMBER -----		21

* This manual supersedes TM 9-6650-215-35P, 12 May 1964 including all changes.

Section I. INTRODUCTION

1. Scope.

This manual lists repair parts, special tools, and test equipment required for the performance of direct support, general support, and depot maintenance of the Binocular M18 W/E.

2. General.

This Repair Parts and Special Tools List is divided into the following sections:

a. Repair Parts-Section II. A list of repair parts authorized for the performance of maintenance at the direct support, general support, and depot level in figure and item number sequence.

b. Special Tools, Test and Support Equipment-Section III. A list of special tools, test and support equipment authorized for the performance of maintenance at the direct support, general support, and depot level.

c. Federal Stock Number and Reference Number Index-Section IV. A list of Federal Stock Numbers in ascending numerical sequence followed by a list of reference numbers in ascending alpha-numeric sequence, cross-referenced to the illustration figure number and item number.

3. Explanation of Columns.

The following provides an explanation of columns in the tabular lists in Section II.

a. Source, Maintenance and Recoverability Codes (SMR), Column 1:

(1) Source code, indicates the selection status and source for the listed item. Source codes are:

<i>Code</i>	<i>Explanation</i>
P	Repair Parts, Special Tools, and Test Equipment supplied from the GSA/DSA, or Army supply system, and authorized for use at indicated maintenance categories.
P2	Repair Parts, Special Tools, and Test Equipment which are procured and stocked for insurance purposes because the combat or military essentiality of the end item dictates that a minimum quantity be available in the supply system.
P9	Assigned to items which are NSA design controlled : Unique repair parts, special tools, test, measuring and diagnostic equipment, which are stocked and supplied by the Army COMSEC Logistic System and which are not subject to the provisions of AR 389-41.
P10	Assigned to items which are NSA design controlled: Special tools, test, measuring and diagnostic equipment for COMSEC support,

<i>Code</i>	<i>Explanation</i>
M	Repair Parts, Special Tools, and Test Equipment which are not procured or stocked, as such, in the supply system but are to be manufactured at indicated maintenance levels.
A	Assemblies which are not procured or stocked as such, but are made up of two or more units. Such component units carry individual stock numbers and descriptions, are procured and stocked separately and can be assembled to form the required assembly at indicated maintenance categories.
X	Parts and assemblies that are not procured or stocked because the failure rate is normally below that of the applicable end item or component. The failure of such part or assembly should result in retirement of the end item from the supply system.
X1	Repair Parts which are not procured or stocked. The requirement for such items will be filled by the next higher assembly or component.
X2	Repair Parts, Special Tools, and Test Equipment which are not stocked and have no foreseen mortality. The indicated maintenance category requiring such repair parts will attempt to obtain the parts through cannibalization or salvage, if not obtainable through cannibalization or salvage, the item may be requisitioned with exception data, from the end item manager, for immediate use.
G	Major assemblies that are procured with PEMA funds for initial issue only as exchange assemblies at DSU and GSU level. These assemblies will not be stocked above the DS and GS level or returned to depot supply level.

Note: Cannibalization or salvage may be used as a source of supply for any items source coded above except those coded X1 and aircraft support items as restricted by AR 700-42.

(2) Maintenance code, indicates the lowest category of maintenance authorized to install the listed item. The maintenance level codes are:

<i>Code</i>	<i>Explanation</i>
C	Crew or Operator Maintenance
O	Organizational Maintenance
F	Direct Support Maintenance
H	General Support Maintenance
D	Depot Maintenance

(3) Recoverability code, indicates whether unserviceable items should be returned for recovery or salvage. Items not coded are expendable. Recoverability codes are:

<i>Code</i>	<i>Explanation</i>
R	Applies to repair parts (assemblies and components) special tools and test equipment which are considered economically repairable at direct and general support maintenance levels. When the item is no longer economi-

<i>Code</i>	<i>Explanation</i>
	ally repairable, it is normally disposed of at the GS level. When supply considerations dictate, some of these repair parts may be listed for automatic return to supply for depot level repair as set forth in AR 710-50. When so listed, they will be replaced by supply on an exchange basis.
S	Repair parts, special tools, test equipment, and assemblies which are economically repairable at DSU and GSU activities and which normally are furnished by supply on an exchange basis. When items are determined by a GSU to be uneconomically repairable, they will be evacuated to a depot for evaluation and analysis before final disposition.
T	Higher dollar value recoverable repair parts, special tools, and test equipment which are subject to special handling and are issued on an exchange basis. Such items will be evacuated to the depot for overhaul or final disposition. Communications-Electronics and Missile Support Items will be repaired/overhauled only at depots.
U	Repair parts, special tools, and test equipment specifically selected for salvage by reclamation units because of precious metal content, critical materials, high dollar value, or reusable casings or castings.

b. Federal Stock Number, Column 2. This column indicates the Federal Stock number assigned to the item and will be used for requisitioning purposes.

c. Description, Column 3. This column indicates the Federal item name and any additional description of the item required. The abbreviation "W/E" when used as a part of the nomenclature indicates the Federal stock number includes all armament, equipment, accessories, and repair parts issued with the item. A part number or other reference number is followed by the applicable five-digit Federal Supply Code for manufacturer in parentheses.

d. Unit of Measure (U/M), Column 4. A 2 character alphabetic abbreviation indicating the amount or quantity of the item upon which the allowances are based e.g., ft, ea, pr, etc.

e. Quantity Incorporated in Unit, Column 5. This column indicates the quantity of the item used in the assembly or the portion illustrated. A "V" appearing in this column in lieu of a quantity indicates that a definite quantity cannot be indicated e.g., shims, spacers, gaskets, etc.

f. 30-Day DS/GS Maintenance Allowances, Columns 6 and 7.

Note: Allowances in GS column are for GS maintenance only.

(1) The allowance columns are divided into three subcolumns. Indicated in each subcolumn,

opposite the first appearance of each item, is the total quantity of items authorized for the number of equipments supported. Subsequent appearances of the same item will have the letters "REF" in the applicable allowance columns. Items authorized for use as required but not for initial stockage are identified with an asterisk in the allowance column.

(2) The quantitative allowances for DS/GS levels of maintenance will represent initial stockage for a 30-day period for the number of equipments supported.

(3) Determination of the total quantity of parts required for maintenance of more than 100 of these equipments can be accomplished by converting the equipment quantity to a decimal factor by placing a decimal point before the next to last digit of the number to indicate hundredths, and multiplying the decimal factor by the parts quantity authorized in the 51-100 allowance column. Example, authorized allowance for 51-100 equipment is 40; for 150 equipments multiply 40 by 1.50 or 60 parts required.

g. 1-Year Allowances Per 100 Equipments/Contingency Planning Purposes, Column 8. This column indicates opposite the first appearance of each item the total quantity required for distribution and contingency planning purposes. The range of items indicates total quantities of all authorized items required to provide for adequate support of 100 equipments for one year.

h. Depot Maintenance Allowance Per 100 Equipments, Column 9. This column indicates opposite the first appearance of each item, the total quantity authorized for depot maintenance of 100 equipments. Subsequent appearances of the same item will have the letters "REF" in the allowance column. Items authorized for use as required but not for initial stockage are identified with an asterisk in the allowance column.

i. Illustration, Column 10. This column is divided as follows:

(1) *Figure number, Column 10a.* Indicates the figure number of the illustration in which the item is shown.

(2) *Item Number, Column 10b.* Indicates the callout number used to reference the item in the illustration.

4. Special Information.

a. Action change codes indicated in the left hand margin of the listing page denote the following:

N—Indicates an added item not included in previous publications.

C—Indicates a change in data.

F—Indicates a change in FSN only.

b. To maintain disassembly sequence in this manual, a sequence number in parentheses will be displayed immediately to the right of the call-out number on the illustration.

5. How to locate Repair Parts.

a. When Federal Stock number or reference number is unknown:

(1) *First.* Using the table of contents determine the assembly group, within which the repair part belongs. This is necessary since illustrations are prepared for assembly groups and listings are divided into the same groups.

(2) *Second.* Find the illustration covering the assembly group to which the repair part belongs.

(3) *Third.* Identify the repair part on the illustration and note the illustration figure and item number of the repair part.

(4) *Fourth.* Using the Repair Parts Listing, find the assembly group to which the repair part belongs and locate the illustration figure and item number noted on the illustration.

b. When Federal Stock Number or reference number is known:

(1) *First.* Using the Index of Federal Stock Numbers and Reference Numbers find the pertinent Federal stock number or reference number. This index is in ascending FSN sequence followed by a list of reference numbers in ascending alpha-numeric sequence, cross-referenced to the illustration figure number and item number.

(2) *Second.* Using the Repair Part Listing, find the assembly group of the repair part and the illustration figure number and item number referenced in the Index of Federal Stock Numbers and Reference Numbers.

6. Abbreviations.

<i>Abbreviation</i>	<i>Explanation</i>
ac	alternating current
acrflt	across flats
al	aluminum
aly	alloy
amp	amphere
andz	anodize
brs	brass
bfl	back focal length
blk	black
cd pl	cadmium plate
cncv	concave

<i>Abbreviation</i>	<i>Explanation</i>
cnx	convex
cres	corrosion resistant steel
cross-rec	cross recessed
cryg	carrying
cksh	countersunk head
ctr	center
cup-pt	cup point
db	double bottom
dbl	double
dia	diameter
elec	electrical
elf	extremely low frequency
ext	external
fbr	feedback resistance
fl	flat
flg	flange
fnsh	finish
foc	focal
fp	flat point
gl	glass
h	high
hex-sot	hexagonal socket
id	inside diameter
intl	internal
l	long
no	number
ns	national special
nyl	nylon
od	outside diameter
oa	overall
pl	plate
pld	plated
plstc	plastic
psvt	passivate
rbr	rubber
scdp	steel cadmium plated
sft	shaft
stl	steel
str	straight
synth	synthetic
tng	tongue
tpr	taper
unc	unified coarse thread
w	wide

7. Federal Supply Codes for Manufacturers

<i>Code</i>	<i>Manufacturer</i>
19200	Frankford Arsenal Phila., Pa. 19137
81349	Military Specifications promulgated by Standardization Div Directorate of Logistics Services DSA
96906	Military Specifications promulgated by Standardization Div Directorate of Logistics Services DSA
00000	Ordnance Corps
24617	General Motors Corp. 3044 Grand Blvd. W. Detroit, Mich. 48202
49671	Radio Corp. of America Tube Division Lancaster, Penna.

8. Reporting of Errors.

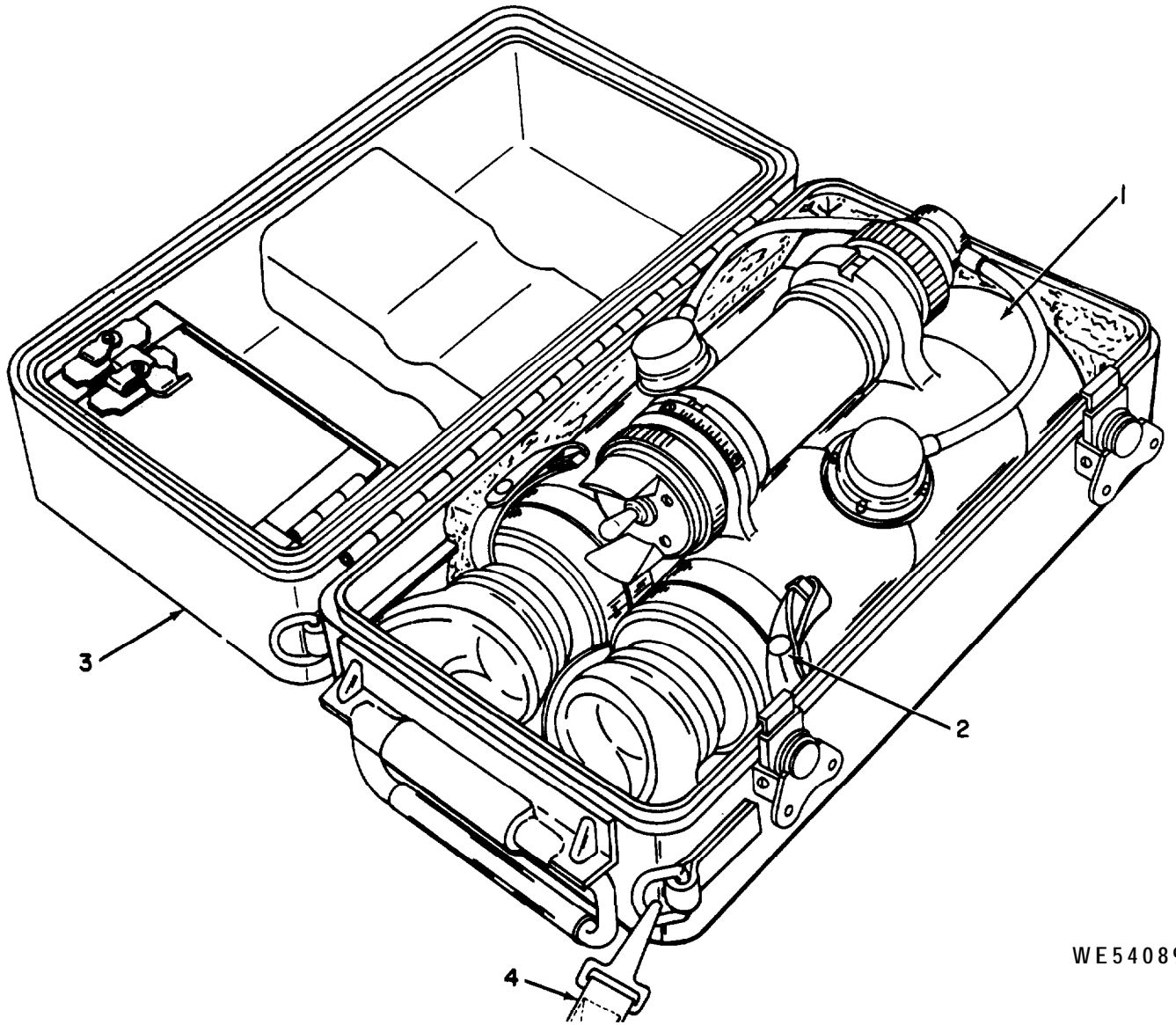
Report of errors, omissions, and recommendations for improving this publication by the in-

dividual user is encouraged. Reports should be submitted on DA Form 2028 (Recommended Changes to DA Publications) and forwarded di-

rect to the Commanding Officer, Frankford Arsenal, ATTN: AMSWE-SMF-W3100, Philadelphia, PA. 19137.

Section II. REPAIR PARTS FOR DIRECT SUPPORT, GENERAL SUPPORT and DEPOT MAINTENANCE

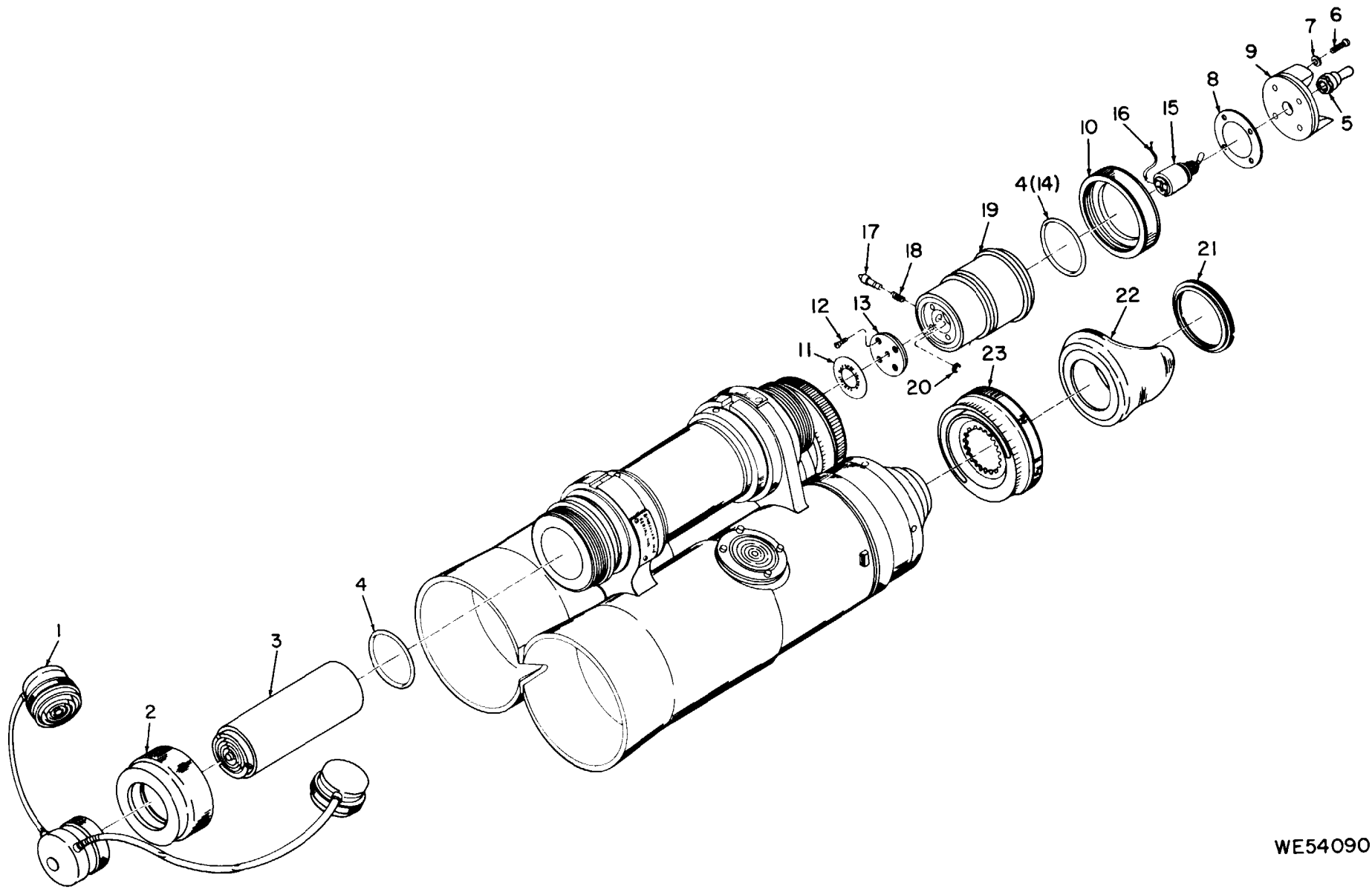
Act on cod e	(1)	(2)	(3) Description		(4)	(5)	(6) 30-Day DS Maint Allowance			(7) 30-Day GS Maint Allowance			(8) 1-Yr alw per 100 equip cntgcy	(9) Depot maint alw per 100 equip	(10) Illustration	
	SMR code	Federal stock No.	Reference Number & Mfg Code	Usable on Code	Unit of meas	Qty inc in unit	(a) 1-20	(b) 21-50	(c) 51-100	(a) 1-20	(b) 21-50	(c) 51-100			(a) Fig. No.	(b) Item No.
	C	X1-		BINOCULAR, M18 W/E 8270115 BINOCULAR, IR M18 10514360 (19200)			1									1



WE54089

Figure 1. Binocular, M18 W/E

Act on code	(1) SMR code	(2) Federal stock No.	(3) Description <i>Reference Number & Mfg Code Usable on Code</i>		(4) Unit of meas	(5) Qty inc in unit	(6) 30-Day DS Maint Allowance			(7) 30-Day GS Maint Allowance			(8) 1-Yr alw per 100 equip cntgcy	(9) Depot maint alw per 100 equip	(10) Illustration	
							(a)	(b)	(c)	(a)	(b)	(c)			(a)	(b)
							1-20	21-50	51-100	1-20	21-50	51-100			Fig. No.	Item No.
			BINOCULAR 105143360													
C	P-C-	6135-120-1010	BATTERY, DRY TYPE BA-42 REQUISITION IN ACCORDANCE WITH SB-11-6 MIL-B-18 (81349)		EA	1										
C	P-C-	6650-996-7300	CABLE ASSEMBLY, RADIO FREQUENCY 8287003 (19200)		EA	2	1	1	2	1	1	2	24	10	2	1
N	X		CAP 8620083 (19200)			1									2	2
C	P-F-	1240-077-1688	POWER SUPPLY, SOLID STATE 10516158 (19200)		EA	1	1	1	2	1	1	2	24	8	2	3
C	P-F-	5330-995-4938	PACKING, PREFORMED SYNTH RBR, 0.989 ID, 1.140 OD 8620088 (00000)		EA	2	1	1	2	1	1	2	24	10	2	4
N	P-F-	5930-892-9362	BOOT, DUST AND MOISTURE SILICONE REBR, 0.067 ID, 0.52 H OA, 0.375 W ACRFLT MIL-B-5423/5 (81349)		EA	1	1	1	2	1	1	2	24	8	2	5
N	P-F-	5305-054-5640	SCREW MACHINE PNH, CROSS-REC, CRES, PSVT FNSH, NO 2-56UNC-2A, 7/16 L MS51957-6 (96906)		EA	4	1	1	2	1	1	2	24	10	2	6
C	P-F-	5310-543-4652	WASHER, LOCK FL, INTL T, CRES, PSVT FNSH, 0.095 ID, 0.200 OD, 0.15 THK MS35333-69 (96906)		EA	4	1	1	2	1	1	2	24	10	2	7
C	P-F-	6650-996-7295	GASKET SYNTH RBR, 25/32 ID, 15/16 OD 8620180 (19200)		EA	1	1	2	3	1	2	3	36	20	2	8
N	P-D-	1240-186-5967	PLATE BINOCULAR 8582700 (19200)		EA	1								4	2	9
N	P-D-	1240-186-5966	RING, RETAINING, OPTICAL ELEMENT 8620178 (19200)		EA	1								4	2	10
C	P-F-	7690-995-4064	DECAL 8620179 (19200)		EA	1	1	2	3	1	2	3	36	20	2	11
N	P-D-	5305-727-8833	SCREW, MACHINE FL CSKH, CROSS-REC, CRES, PSVT FNSH, NO 2-56UNC-2A, 1/4 L MS51959-3 (96906)		EA	4								20	2	12



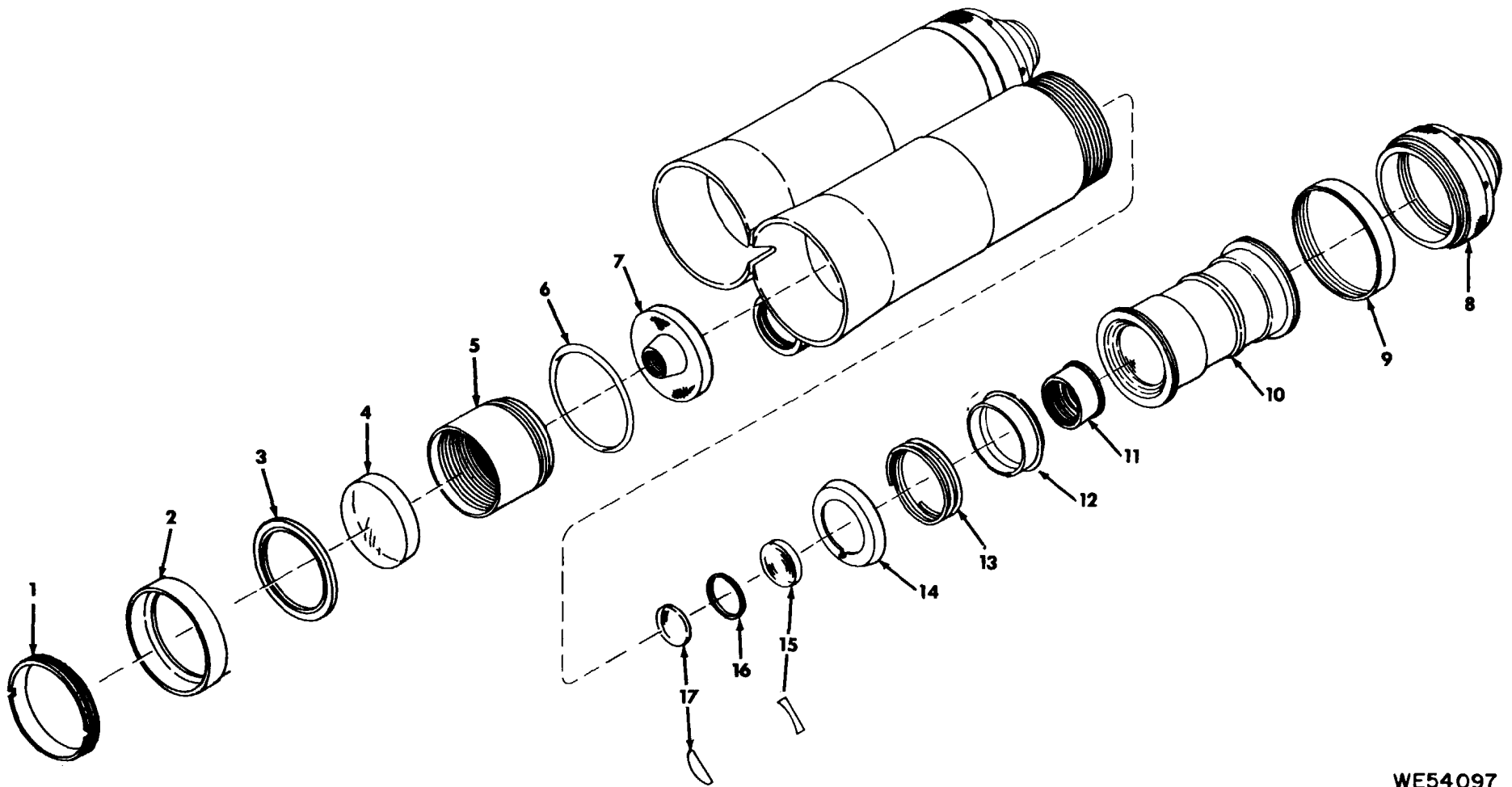
WE54090

Figure 2. Binocular

Act on code	(1) SMR code	(2) Federal stock No.	(3) Description Reference Number & Mfg Code Usable on Code		(4) Unit of meas	(5) Qty inc in unit	(6) 30-Day DS Maint Allowance			(7) 30-Day GS Maint Allowance			(8) 1-Yr alw per 100 equip cntgcy	(9) Depot maint alw per 100 equip	(10) Illustration	
							(a) 1-20	(b) 21-50	(c) 51-100	(a) 1-20	(b) 21-50	(c) 51-100			(a) Fig. No.	(b) Item No.
							N	X-		PLATE 8620068 (19200)		1				
N	P-F-	5930-578-9817	SWITCH, TOGGLE SPDT, DB, 115V AC 2.5 AMP, 0.516 L 0.344 DIA 10533290	EA	1	*	1	1	*	1	1	12	8	2	15	
N	P-F-	6145-859-1250	WIRE TYPE E-24, SPEC MIL-W-16878/5A MIL-W-16878/5A (81349)	FT	V	*	1	1	*	1	1	12	1	2	16	
C	P-D-	6650-953-0124	CONTACT 8620071 (19200)	EA	1								8	2	17	
C	P-D-	6650-996-7296	SPRING, HELICAL COMPRESSION 8620188 (19200)	EA	1								5	2	18	
N	P-F-	6650-136-4923	HOUSING, BINOCULAR PLSTC, 1-290 DIA, 1.218 OAL, 4 TAPPED HOLES 8620084 (19200)	EA	1	1	1	2	1	1	2	24	10	2	19	
C	P-D-	5340-619-7229	RING, RETAINING EXT, SCDP, 0.062 SFT DIA MS16633-1006 (96096)	EA	1								10	2	20	
C	P-O-	5310-088-9171	NUT, PLAIN, ROUND AL, ANDZ FNSH, 1.051-32NS-3B, 1.251 OD, 0.135 THK 10514477 (19200)	EA	2	1	1	2	1	1	2	24	8	2	21	
N	P-O-	6650-824-0745	EYESHIELD, OPTICAL INSTRUMENT SYNTH RBR, BLK, 1.812 DIA, 2.062 L 10525656 (19200)	EA	2	1	1	2	1	1	2	24	10	2	22	
N	P-H-	5355-782-0451	DIAL, SCALE 2.125 OD, 0.109 THK 10525657 (19200)	EA	2				1	1	2	24	8	2	23	

Act on code	(1) SMR code	(2) Federal stock No.	(3) Description Reference Number & Mfg Code Usable on Code		(4) Unit of meas	(5) Qty inc in unit	(6) 30-Day DS Maint Allowance			(7) 30-Day GS Maint Allowance			(8) 1-Yr alw per 100 equip cntgcy	(9) Depot maint alw per 100 equip	(10) Illustration	
							(a) 1-20	(b) 21-50	(c) 51-100	(a) 1-20	(b) 21-50	(c) 51-100			(a) Fig. No.	(b) Item No.
			BODY 8620086 W/RELATED PARTS													
C	P-D-	6650-051-6268	RING, EXTERNALLY THREADED AL, ANDZ, 2.356-2.303 TPR CTR HOLE DIA, 2.408-32UNS-3A, 2.408 OA L, 1 Slot 0.032 W 10514427 (19200)		EA	2								8	3	1
N	X-		RETAINER 10514424 (19200)			2									3	2
N	X-		RING, MOLDED 10514434 (19200)			2									3	3
N	P-D-	6650-789-4016	LENS, OPTICAL INSTRUMENT 8566943 (19200)		EA	2								6	3	4
N	X-		SPACER 10514444 (19200)			2									3	5
C	P-D-	5330-995-4066	PACKING, PREFORMED RBR, TYPE S, 2.175 OD, 0.103 THK 10514468 (19200)		EA	2								15	3	6
C	P-D-	1240-789-4018	MIRROR ASSEMBLY 8287022 (19200)		EA	2								6	3	7
N	X-		MOUNT ASSEMBLY, EYEPIECE 10514369 (19200)			2									3	8
C	P-D-	5310-088-9169	NUT, PLAIN, ROUND AL, ANDZ FNSH, 2.312-32NS-3B, 2.437 OD, 0.375 THK 10514481 (19200)		EA	2								6	3	9
N	P-F-	5960-082-3326	ELECTRON TUBE, IMAGE CONVERTER 6914 (49671)		EA	2	1	2	4	1	2	4	48	30	3	10
N	P-D-	6650-113-2971	RING, RETAINING, OPTICAL ELEMENT BRS, 0.866 ID, 1-219-2ONS-3B, 1.396 OD, 1.186 P DIA, 0.050 FLG THK 10553236 (19200)		EA	2								6	3	11
C	P-D-	6650-996-7306	RING, CONTACT 2.344 ID, 1.783 OD 10553236 (19200)		EA	2								10	3	12
N	P-D-	5340-369-9117	SPRING, HELICAL, COMPRESSION STL, TIN PLD FNSH, 1.515 ID, 7/8 FRHGT 10553235 (19200)		EA	2								5	3	13
C	P-D-	6650-996-7302	RING BR, 1.250 ID, 1.908 OD, 0.015 THK 10514425 (19200)		EA	2								5	3	14

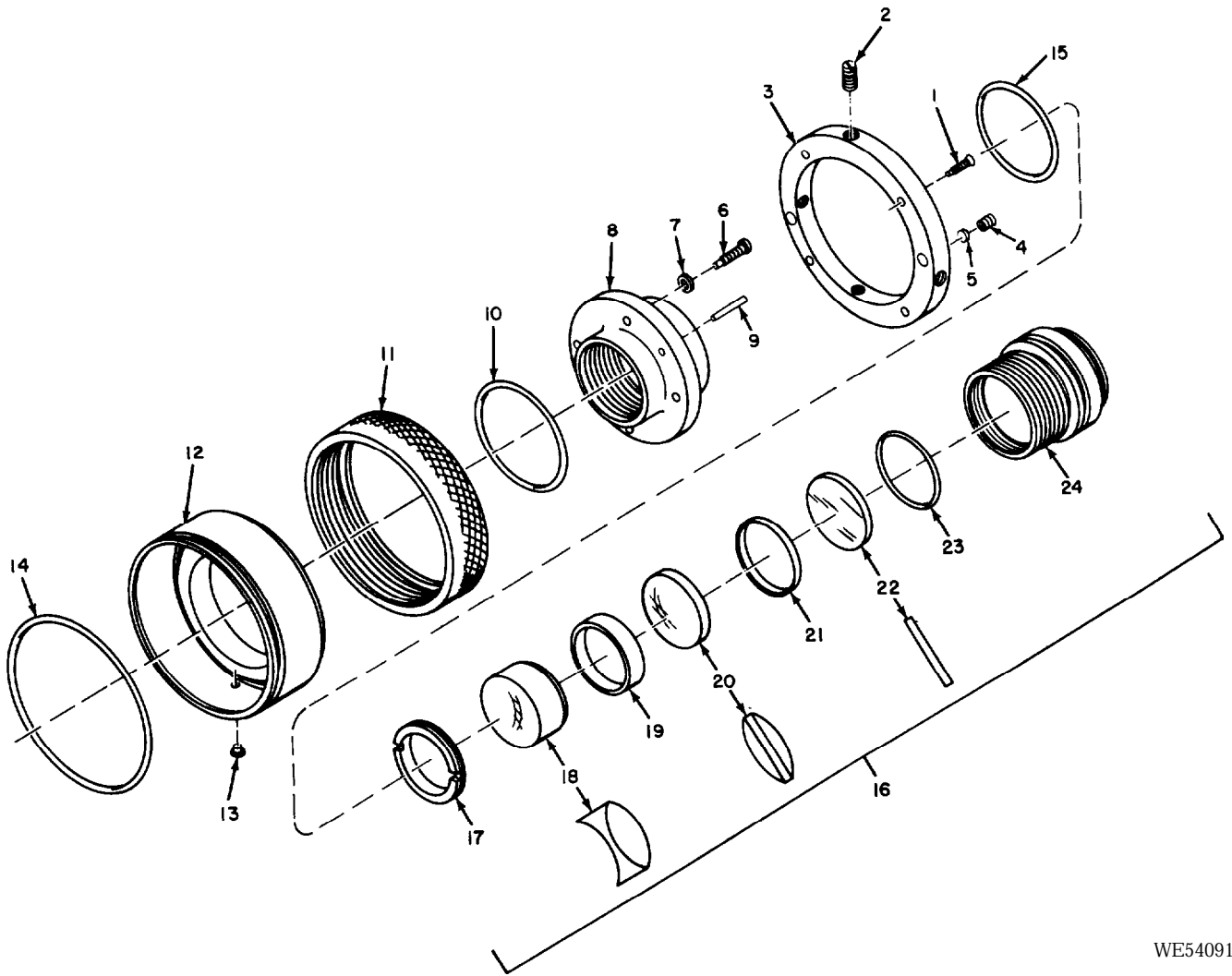
Act on code	(1) SMR code	(2) Federal stock No.	(3) Description <i>Reference Number & Mfg Code</i> <i>Usable on Code</i>		(4) Unit of meas	(5) Qty inc in unit	(6) 30-Day DS Maint Allowance			(7) 30-Day GS Maint Allowance			(8) 1-Yr alw per 100 equip cntgcy	(9) Depot maint alw per 100 equip	(10) Illustration	
							(a) 1-20	(b) 21-50	(c) 51-100	(a) 1-20	(b) 21-50	(c) 51-100			(a) Fig. No.	(b) Item No.
							C	P-D-	6650-789-4017	LENS, OPTICAL INSTRUMENT 8566940 (19200)	EA	2				
N	X-		RING 10514483 (19200)		2									3	16	
C	P-D-	6650-789-4015	LENS, OPTICAL INSTRUMENT 8566941 (19200)	EA	2								10	3	17	



WE54097

Figure 3. Body w/related parts

Act on code	(1) SMR code	(2) Federal stock No.	(3) Description Reference Number & Mfg Code Usable on Code		(4) Unit of meas	(5) Qty inc in unit	(6) 30-Day DS Maint Allowance			(7) 30-Day GS Maint Allowance			(8) 1-Yr alw per 100 equip cntgcy	(9) Depot maint alw per 100 equip	(10) Illustration	
							(a) 1-20	(b) 21-50	(c) 51-100	(a) 1-20	(b) 21-50	(c) 51-100			(a) Fig. No.	(b) Item No.
							C	P-D-	5305-764-2964	SCREW, MACHINE FL CSKH, CROSS-REC, CRES, PSVT FNSH NO 2-56UNC-2A, 5/16 L MS51959-4 (96906)		EA			8	
N	P-D-	5305-995-8766	SETSCREW HEX SOC, FP, CRES, PSVT FNSH NO 8-32UNC-3A, 1/4 L MS51029-27 (96906)		EA	4								10	4	2
C	P-D-	6650-996-7303	RING, COLLIMATOR ALL, 1.790 ID, 2.317 OD, 0.225 THK 10514408 (19200)		EA	2								3	4	3
C	P-D-	5305-719-5330	SETSCREW HEX SOC, CUP PT, ALY STL, CD PL, NO 6-32UNC-3A, 3/16 L MS51963-21 (96906)		EA	2								20	4	4
N	P-D-	1220-087-2729	DISK, SOLID, PLAIN PLSTC, 0.093 OD, 0.046 THK 8619986 (19200)		EA	2								10	4	5
C	P-D-	5305-054-5639	SCREW,MACHINE PNH, CROSS-REC, CRES, PSVT FNSH, NO 3-56UNC-2A, 3/8 L MS51957-5 (96906)		EA	8								10	4	6
C	P-F-	5310-543-4652	WASHER, LOCK MS35333-69 (96906)		EA	8	REF	REF	REF	REF	REF	REF		REF	4	7
N	P-D-	1240-186-5963	MOUNT, EYEPIECE CELL 10514407 (19200)		EA	2								5	4	8
N	P-D-	5315-733-2495	PIN, STRAIGHT, HEADLESS CRES, PSVT FNSH, 3/32 DIA, 1 L MS16555-624 (96906)		EA	2								3	4	9
C	P-D-	5330-995-4068	PACKING, PREFORMED SYTH RBR, 1.301 ID, 0.070 OA HGT 10514471 (19200)		EA	2								20	4	10
C	P-D-	6650-953-0126	NUT, PLAIN, KNURLED AL ALY, DYED BLK, 2 5/16-32NS-3B, 2093 ID, 2.44 OD, 31/64 THK 10514430 (19200)		EA	2								3	4	11
C	P-D-	6650-953-0119	ADAPTER, EYEPIECE 10514402 (19200)		EA	2								10	4	12
C	P-D-		PIN, STRAIGHT HEADED 10514497 (19200)		EA	2								5	4	13



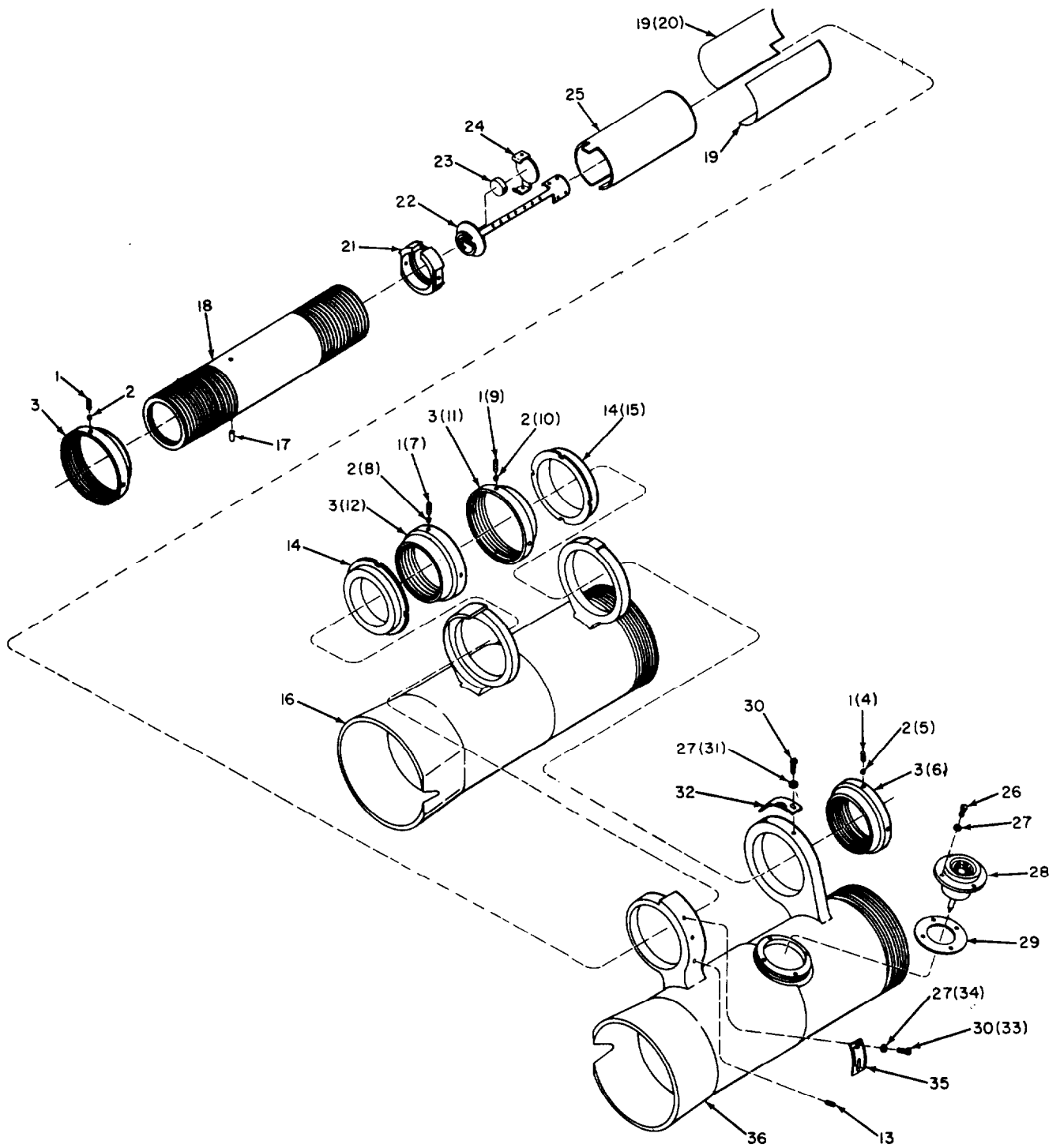
WE54091

Figure 4. Mount assembly eyepiece

Act on code	(1) SMR code	(2) Federal stock No.	(3) Description Reference Number & Mfg Code Usable on Code		(4) Unit of meas	(5) Qty inc in unit	(6) 30-Day DS Maint Allowance			(7) 30-Day GS Maint Allowance			(8) 1-Yr alw per 100 equip cntgcy	(9) Depot maint alw per 100 equip	(10) Illustration	
							(a) 1-20	(b) 21-50	(c) 51-100	(a) 1-20	(b) 21-50	(c) 51-100			(a) Fig. No.	(b) Item No.
							P-D-	5330-995-4065	PACKING, PREFORMED SYTH RBR, 1.987 ID, 0.125 OA HGT 10514467 (19200)	EA	2					
P-D-	5330-995-4067	PACKING, PREFORMED SYNTH RBR, 1.051 ID, 0.070 OA HGT 10514469 (19200)	EA	2								20	4	15		
X-		CELL, EYEPiece ASSEMBLY 10514373 (19200)		2									4	16		
P-D-	6650-957-7861	RING, EXTERNALLY THREADED AL, ANDZ, 0.845 STR BORE DIA, 0.965-32NS-3A, 0.908 OAL 10514479 (19200)	EA	2								5	4	17		
P-D-	6650-995-5741	LENS, OPTICAL INSTRUMENT GL, 0.375 ET, 0398 AXIAL THK, 0.906 DIA, DBL CNCV AND CVX, 4.392 EQUIV FOC L, 4.991 BFL, 4.616 FFL 10514394 (19200)	EA	2								6	4	18		
X-		SPACER 10514489 (19200)		2									4	19		
P-D-	6650-953-9511	LENS, OPTICAL INSTRUMENT GL, 0.906 DIA, 1.171 EFL, 1.094 BFL, 0.870 FFL 10514393 (19200)	EA	2								8	4	20		
X-		SPACER 10514488 (19200)		2									4	21		
P-D-	6650-953-0127	LENS, ASPHERIC 10514392 (19200)	EA	2								10	4	22		
P-D-	5330-995-4937	PACKING, PREFORMED SYNTH RBR, BLK, 0.801 ID, 0.070 OA HGT 10514470 (19200)	EA	2								10	4	23		
P-D-	6650-953-0122	CELL, EYEPiece 10514374 (19200)	EA	2								6	4	24		

Act on code	(1) SMR code	(2) Federal stock No.	(3) Description Reference Number & Mfg Code Usable on Code		(4) Unit of meas	(5) Qty inc in unit	(6) 30-Day DS Maint Allowance			(7) 30-Day GS Maint Allowance			(8) 1-Yr alw per 100 equip cntgcy	(9) Depot maint alw per 100 equip	(10) Illustration	
							(a) 1-20	(b) 21-50	(c) 51-100	(a) 1-20	(b) 21-50	(c) 51-100			(a) Fig. No.	(b) Item No.
							C	P-D-	5305-638-1198	TUBE, HINGE 8620085 W/ RELATED PARTS SETSCREW HEX SOC, FP, CRES, PSVT FNSH, NO 2-56UNC-3A, 1/8 L MS51029-1 (96906)		EA			12	
C	P-D-	1240-819-9600	DISK, SOLID, PLAIN PLSTC NYL, 0.70 OD, 0.041 THK 8620836 (19200)		EA	12								50	5	2
C	P-D-	6650-996-7305	RING AL, 1 11/16 OA DIA, 1/2 THK, 4 HOLED, NO 2-56NC-3B 862175 (19200)		EA	4								4	5	3
N	P-D-	5305-728-5486	SETSCREW HEX SOC, CUP PT, ALY STL, CD PL, NO 2- 56UNC-3A, 1/8 L MS51973-1 (96906)		EA	4								20	5	13
C	P-D-	6650-953-0123	SPACER, OPTICAL ELEMENT 8620082 (19200)		EA	2								5	5	14
N	X-		BODY, L H, CEMENTED 8620087 (19200)			1									5	16
C	P-D-	5315-844-1189	PIN, SPRING TUBULAR COILED, HD, CRES, PSVT FNSH, 1/16 DIA, 5/16 L MS39086-102 (96906)		EA	2								10	5	17
N	X-		TUBE, HINGE 8620085 (19200)			1									5	18
N	X-		INSULATION 8620079 (19200)			1									5	19
C	P-D-	6650-996-7304	RING PLSTC, 1.118 DIA, 3 3/32 W, 0.312 THK, 2 HOLES 1/16 DIA 8620067 (19200)		EA	1								8	5	21
C	P-D-	6650-953-0118	CONTACT, ELECTRICAL 8620185 (19200)		EA	1								10	5	22
N	X-		SPACER 8620177 (00000)			1									5	23
N	P-D-	6650-953-0116	CONTACT, ELECTRICAL 8620194 (19200)		EA	1								6	5	24

Act on code	(1) SMR code	(2) Federal stock No.	(3) Description <i>Reference Number & Mfg Code</i> <i>Usable on Code</i>		(4) Unit of meas	(5) Qty inc in unit	(6) 30-Day DS Maint Allowance			(7) 30-Day GS Maint Allowance			(8) 1-Yr alw per 100 equip cntgcy	(9) Depot maint alw per 100 equip	(10) Illustration	
							(a) 1-20	(b) 21-50	(c) 51-100	(a) 1-20	(b) 21-50	(c) 51-100			(a) Fig. No.	(b) Item No.
							N	P-D-	5970-869-6548	INSULATION SYNTH RBR, 2 27/32 W, 3 1/3 L, 0.010 thk 8620080 (19200)	EA	1				
N	P-D-	5305-054-5637	SCREW, MACHINE PNH, CROSS-REC, CRES, PSVT FNSH, NO 2-56UNC-2A, 1/4 L MS51957-3 (96906)	EA	8								10	5	26	
C	P-F-	5310-543-4652	WASHER, LOCK MS35333-69 (96906)	EA	8	REF	REF	REF	REF	REF	REF		REF	5	27	
C	P-D-	6650-953-0117	CONNECTOR ELEC PL 8287026 (19200)	EA	2								10	5	28	
N	P-D-	5330-995-4940	GASKET FBR, 0.781 ID, 1.218 OD, 0.047 THK 10514458 (19200)	EA	2								10	5	29	
N	P-D-	5305-054-5636	SCREW, MACHINE PNH, CROSS-REC, CRES, PSVT FNSH, NO 2-56UNC-2A, 3/16 L MS51957-2 (96906)	EA	4								5	5	30	
N	P-D-	1240-186-5964	PLATE 8620189 (19200)	EA	1								5	5	32	
N	P-D-	6650-169-1664	PLATE, IDENTIFICATION 8620186 (19200)	EA	1								5	5	35	
N	X-		BODY, R H , CEMENTED 8620086 (19200)		1									5	36	



WE54083

Figure 5. Tube, hinge w/related parts

**Section III. SPECIAL TOOLS, TEST AND SUPPORT EQUIPMENT FOR DIRECT SUPPORT, GENERAL SUPPORT and
DEPOT MAINTENACE**

Act on code	(1) SMR code	(2) Federal stock No.	(3) Description <i>Reference Number & Mfg Code</i> <i>Usable on Code</i>		(4) Unit of meas	(5) Qty inc in unit	(6) 30-Day DS Maint Allowance			(7) 30-Day GS Maint Allowance			(8) 1-Yr alw per 100 equip cntgcy	(9) Depot maint alw per 100 equip	(10) Illustration	
							(a) 1-20	(b) 21-50	(c) 51-100	(a) 1-20	(b) 21-50	(c) 51-100			(a) Fig. No.	(b) Item No.
							C	P-C-	6650-764-6236	TOOLS AND EQUIPMENT	EQUIPMENT	EA			1	1
C	P-C-	6650-850-3312	CASE, BINOCULAR AL, ANDZ FNSH, HAND TYPE CRYG STRAP 10514520 (19200)		EA	1	*	1	1	*	1	1	12	5	1	3
			REPAIR PARTS FOR EQUIPMENT CASE BINOCULAR													
C	P-O-	6650-953-0120	STRAP 10514522 (19200)		EA	1	1	2	2	1	2	2	24	15	1	4

Section IV. INDEX-FEDERAL STOCK NUMBER AND REFERENCE NUMBER CROSS-REFERENCED TO FIGURE AND ITEM NUMBER

<i>STOCK NUMBER</i>	<i>FIGURE NO.</i>	<i>ITEM NO.</i>	<i>STOCK NUMBER</i>	<i>FIGURE NO.</i>	<i>ITEM NO.</i>
1220-087-2729	4	5	5930-892-9362	2	5
1240-077-1688	2	3	5960-082-3326	3	10
1240-186-5963	4	8	5970-869-6548	5	25
1240-186-5964	5	32	6145-859-1250	2	16
1240-186-5967	2	9	6650-051-6268	3	1
1240-186-5966	2	10	6650-113-2971	3	11
1240-789-4018	3	7	6650-136-4923	2	19
1240-819-9600	5	2	6650-169-1664	5	35
5305-054-5636	5	30	6650-764-6236	1	2
5305-054-5637	5	26	6650-789-4015	3	17
5305-054-5639	4	6	6650-789-4016	3	4
5305-054-5640	2	6	6650-789-4017	3	15
5305-638-1198	5	1	6650-824-0745	2	22
5305-719-5330	4	4	6650-850-3312	1	3
5305-727-8833	2	12	6650-953-0116	5	24
5305-728-5486	5	13	6650-953-0117	5	28
5305-764-2964	4	1	6650-953-0118	5	22
5305-995-8766	4	2	6650-953-0119	4	12
5310-088-9169	3	9	6650-953-0120	1	4
5310-088-9171	2	21	6650-953-0122	4	24
5310-543-4652	2	7	6650-953-0123	5	14
5310-543-4652	4	7	6650-953-0124	2	17
5310-543-4652	5	27	6650-953-0126	4	11
5315-733-2495	4	9	6650-953-0127	4	22
5315-844-1189	5	17	6650-953-9511	4	20
5330-995-4065	4	14	6650-957-7861	4	17
5330-995-4066	3	6	6650-995-5741	4	18
5330-995-4067	4	15	6650-996-7295	2	8
5330-995-4068	4	10	6650-996-7296	2	18
5330-995-4937	4	23	6650-996-7300	2	1
5330-995-4938	2	4	6650-996-7302	3	14
5330-995-4940	5	29	6650-996-7303	4	3
5340-369-9117	3	13	6650-996-7304	5	21
5340-619-7229	2	20	6650-996-7305	5	3
5355-782-0451	2	23	6650-996-7306	3	12
5930-578-9817	2	15	7690-995-4064	2	11

<i>REFERENCE NO.</i>	<i>MFR. CODE</i>	<i>FIGURE NO.</i>	<i>ITEM NO.</i>	<i>REFERENCE</i>	<i>MFR. CODE</i>	<i>FIGURE NO.</i>	<i>ITEM NO.</i>
MIL-B-5423/5	81349	2	5	10514402	19200	4	12
MIL-W-16878/5A	81349	2	16	10514407	19200	4	8
MS16555-624	96906	4	9	10514408	19200	4	3
MS16633-1006	96906	2	20	10514424	19200	3	2
MS35333-69	96906	2	7	10514425	19200	3	14
MS35333-69	96906	4	7	10514426	19200	3	12
MS35333-69	96906	5	27	10514427	19200	3	1
MS39086-102	96906	5	17	10514430	19200	4	11
MS51029-1	96906	5	1	10514434	19200	3	3
MS51029-27	96906	4	2	10514444	19200	3	5
MS51957-2	96906	5	30	10514458	19200	5	29
MS51957-3	96906	5	26	10514467	19200	4	14
MS51957-5	96906	4	6	10514468	19200	3	6
MS51957-6	96906	2	6	10514469	19200	4	15
MS51959-3	96906	2	12	10514470	19200	4	23
MS51959-4	96906	4	1	10514471	19200	4	10
MS51963-21	96906	4	4	10514477	19200	2	21
MS51973-1	96906	5	13	10514479	19200	4	17
10514360	19200	1	1	10514481	19200	3	9
10514369	19200	3	8	10514483	19200	3	16
10514373	19200	4	16	10514488	19200	4	21
10514374	19200	4	24	10514489	19200	4	19
10514392	19200	4	22	10514497	19200	4	13
10514393	19200	4	20	10514520	19200	2	19
10514394	19200	4	18	10514522	19200	1	3

<i>REFERENCE NO.</i>	<i>MFR CODE</i>	<i>FIGURE NO.</i>	<i>ITEM NO.</i>	<i>REFERENCE NO.</i>	<i>MFR CODE</i>	<i>FIGURE NO.</i>	<i>ITEM NO.</i>
10516158	19200	2	3	8620080	19200	5	25
10525656	19200	2	22	8620082	19200	5	14
10525657	19200	2	23	8620083	19200	2	2
10533290	19200	2	15	8620079	19200	5	19
10553235	19200	3	13	8620085	19200	5	18
10553236	19200	3	11	8620086	19200	5	36
6914	49671	3	10	8620087	19200	5	16
7646236	19200	1	2	8620088	00000	2	4
8287003	19200	2	1	8620175	19200	5	3
8287022	19200	3	7	8620177	00000	5	23
8287026	19200	5	28	8620178	19200	2	10
8566940	19200	3	15	8620179	19200	2	11
8566941	19200	3	17	8620180	19200	2	8
8566943	19200	3	4	8620185	19200	5	22
8582700	19200	2	9	8620186	19200	5	36
8619986	19200	4	5	8620188	19200	2	18
8620067	19200	5	21	8620189	19200	5	32
8620068	24617	2	13	8620194	19200	5	24
8620071	19200	2	17	8620836	19200	6	2
8620079	19200	5	19				

By Order of the Secretary of the Army:

Official :

VERNE L. BOWERS
Major General, United States Army,
The Adjutant General.

W. C. WESTMORELAND,
General, United States Army,
Chief of Staff.

DISTRIBUTION :

To be distributed in accordance with DA Form 12—41 (qty rqr block no. 8) Direct and General Support Maintenance Instructions for Binocular.

RECOMMENDED CHANGES TO EQUIPMENT TECHNICAL PUBLICATIONS



THEN...JOT DOWN THE DOPE ABOUT IT ON THIS FORM. CAREFULLY TEAR IT OUT, FOLD IT AND DROP IT IN THE MAIL.

SOMETHING WRONG WITH PUBLICATION

FROM: (PRINT YOUR UNIT'S COMPLETE ADDRESS)

DATE SENT

PUBLICATION NUMBER

PUBLICATION DATE

PUBLICATION TITLE

BE EXACT PIN-POINT WHERE IT IS

PAGE NO.

PARA-GRAPH

FIGURE NO.

TABLE NO.

IN THIS SPACE, TELL WHAT IS WRONG AND WHAT SHOULD BE DONE ABOUT IT.

TEAR ALONG PERFORATED LINE

PRINTED NAME, GRADE OR TITLE AND TELEPHONE NUMBER

SIGN HERE

The Metric System and Equivalents

Linear Measure

1 centimeter = 10 millimeters = .39 inch
 1 decimeter = 10 centimeters = 3.94 inches
 1 meter = 10 decimeters = 39.37 inches
 1 dekameter = 10 meters = 32.8 feet
 1 hectometer = 10 dekameters = 328.08 feet
 1 kilometer = 10 hectometers = 3,280.8 feet

Weights

1 centigram = 10 milligrams = .15 grain
 1 decigram = 10 centigrams = 1.54 grains
 1 gram = 10 decigrams = .035 ounce
 1 dekagram = 10 grams = .35 ounce
 1 hectogram = 10 dekagrams = 3.52 ounces
 1 kilogram = 10 hectograms = 2.2 pounds
 1 quintal = 100 kilograms = 220.46 pounds
 1 metric ton = 10 quintals = 1.1 short tons

Liquid Measure

1 centiliter = 10 milliliters = .34 fl. ounce
 1 deciliter = 10 centiliters = 3.38 fl. ounces
 1 liter = 10 deciliters = 33.81 fl. ounces
 1 dekaliter = 10 liters = 2.64 gallons
 1 hectoliter = 10 dekaliters = 26.42 gallons
 1 kiloliter = 10 hectoliters = 264.18 gallons

Square Measure

1 sq. centimeter = 100 sq. millimeters = .155 sq. inch
 1 sq. decimeter = 100 sq. centimeters = 15.5 sq. inches
 1 sq. meter (centare) = 100 sq. decimeters = 10.76 sq. feet
 1 sq. dekameter (are) = 100 sq. meters = 1,076.4 sq. feet
 1 sq. hectometer (hectare) = 100 sq. dekameters = 2.47 acres
 1 sq. kilometer = 100 sq. hectometers = .386 sq. mile

Cubic Measure

1 cu. centimeter = 1000 cu. millimeters = .06 cu. inch
 1 cu. decimeter = 1000 cu. centimeters = 61.02 cu. inches
 1 cu. meter = 1000 cu. decimeters = 35.31 cu. feet

Approximate Conversion Factors

To change	To	Multiply by	To change	To	Multiply by
inches	centimeters	2.540	ounce-inches	newton-meters	.007062
feet	meters	.305	centimeters	inches	.394
yards	meters	.914	meters	feet	3.280
miles	kilometers	1.609	meters	yards	1.094
square inches	square centimeters	6.451	kilometers	miles	.621
square feet	square meters	.093	square centimeters	square inches	.155
square yards	square meters	.836	square meters	square feet	10.764
square miles	square kilometers	2.590	square meters	square yards	1.196
acres	square hectometers	.405	square kilometers	square miles	.386
cubic feet	cubic meters	.028	square hectometers	acres	2.471
cubic yards	cubic meters	.765	cubic meters	cubic feet	35.315
fluid ounces	milliliters	29.573	cubic meters	cubic yards	1.308
pints	liters	.473	milliliters	fluid ounces	.034
quarts	liters	.946	liters	pints	2.113
gallons	liters	3.785	liters	quarts	1.057
ounces	grams	28.349	liters	gallons	.264
pounds	kilograms	.454	grams	ounces	.035
short tons	metric tons	.907	kilograms	pounds	2.205
pound-feet	newton-meters	1.356	metric tons	short tons	1.102
pound-inches	newton-meters	.11296			

Temperature (Exact)

°F Fahrenheit temperature 5/9 (after subtracting 32) Celsius temperature °C

PIN: 028033-000